

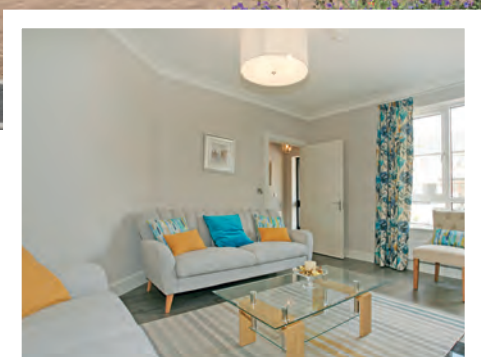
The Poppy

TYPE G1

246 m² • 2,648 ft²



Fox Meadow
by Clancy Homes



The Poppy

Designed for the family living, these are some of the most unique and impressive homes within the development.

These homes offer 246 m² (2,648 ft²) of open plan accommodation. The interior is light filled, spacious and adaptable. The gardens are generous and private.

Fox Meadow by Clancy Homes

Fox Meadow is an exclusive development of large family homes in a rural setting on the edge of the city. The quality, design and attention to detail are of the highest standard. Its proximity to Kilkenny city, and the excellent amenities on the doorstep, all make Fox Meadow a truly sought-after place to call 'home'.



☎ 056 7786000

✉ info@dngelladunphy.com

📍 9 Ormonde Street, Kilkenny City, Co. Kilkenny

foxmeadowhomes.ie

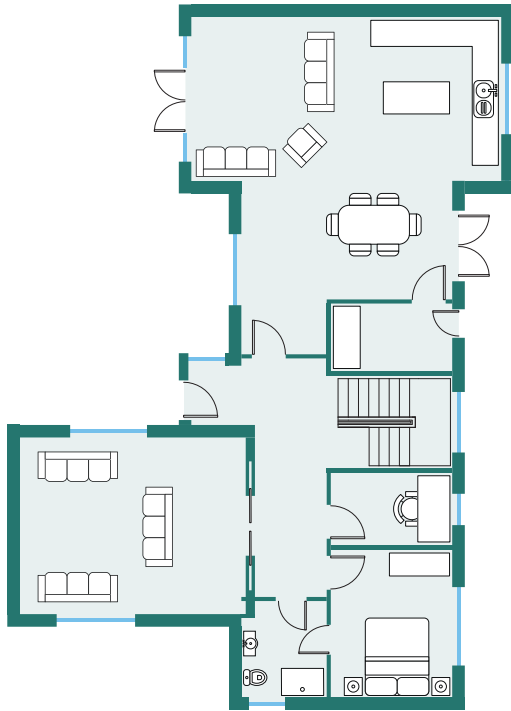
The Poppy

TYPE G1

246 m² • 2,648 ft²

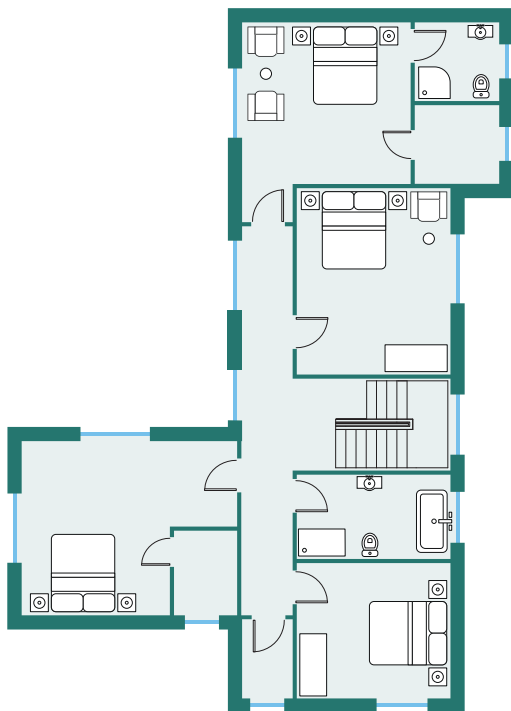


Fox Meadow
by Clancy Homes



Ground Floor

Room	Measurements
Kitchen/Family	4.1m x 7.9m
Dining	5.3m x 2.9m
Utility	3.1m x 1.7m
Living Room	5.7m x 4.5m
Office	3.1m x 1.9m
Bedroom 5	3.75m x 3.1m
WC	2.5m x 2.2m



First Floor

Room	Measurements
Bedroom 1	4.3m x 4.2m
En-suite	2.2m x 2m
Closet	2.2m x 2m
Bedroom 2	4.75m x 3.9m
Bathroom	3.9m x 2.2m
Bedroom 3	4.5m x 3.5m
Closet	2.2m x 1.9m
Bedroom 4	3.5m x 3.1m
Store	2.2m x 2m

The particulars in this brochure are for guidance only and do not form any part of any contract.
Maps and plans are not drawn to scale and measurements are approximate.